

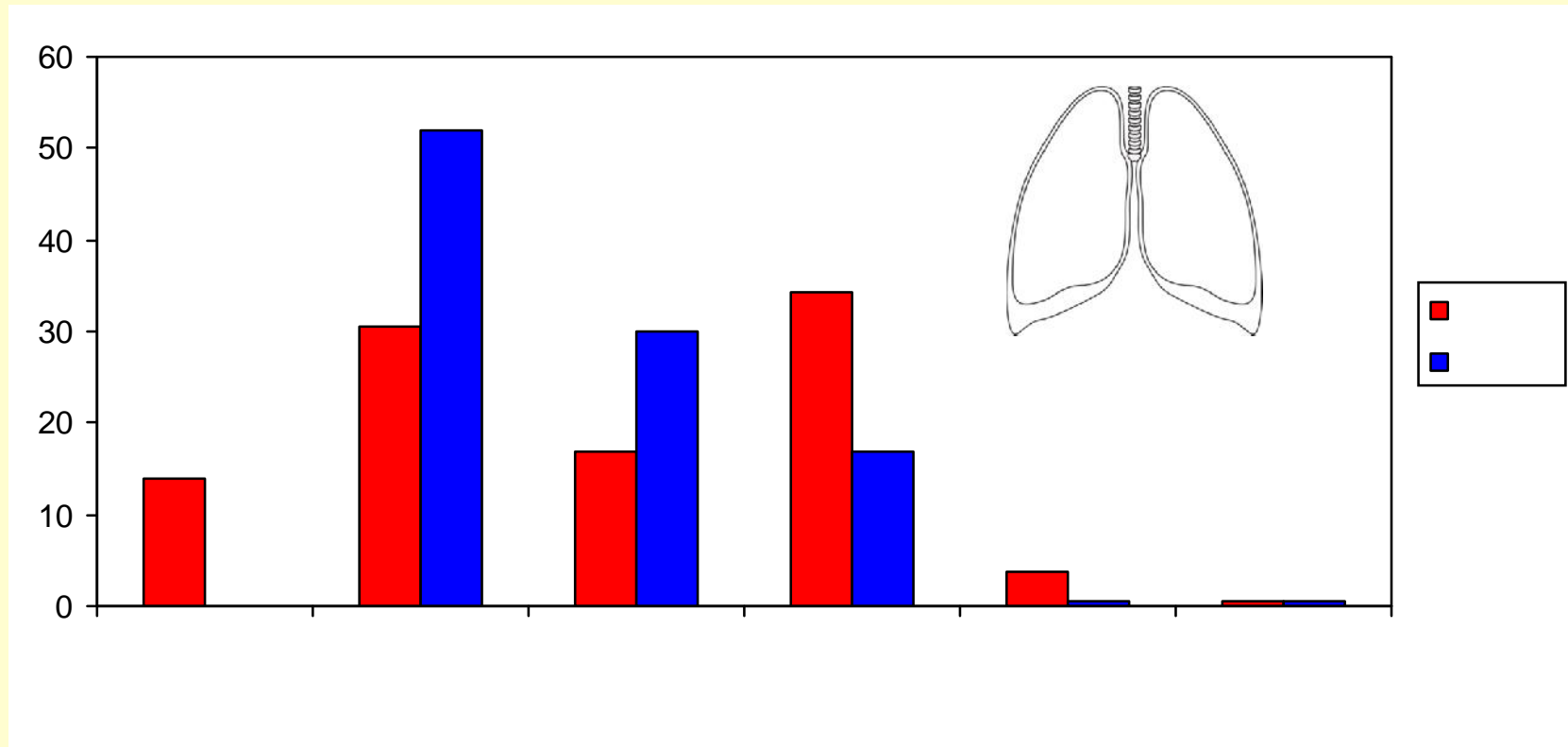


- 29
- 160
- 160

, - ( , ,  
, ) .

- 320 , 21-90 ( .  
56 [43,25; 73,00]);
- 69,4% -

%

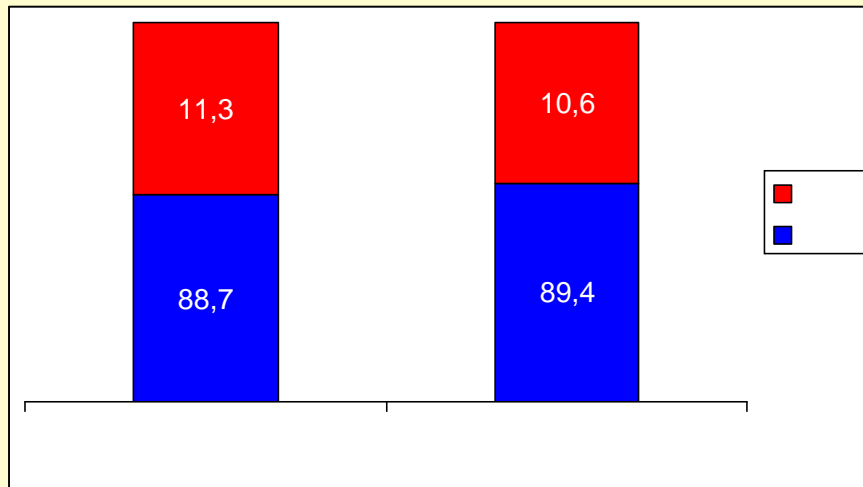


,

= 0.388; 95% 0.229-0.656

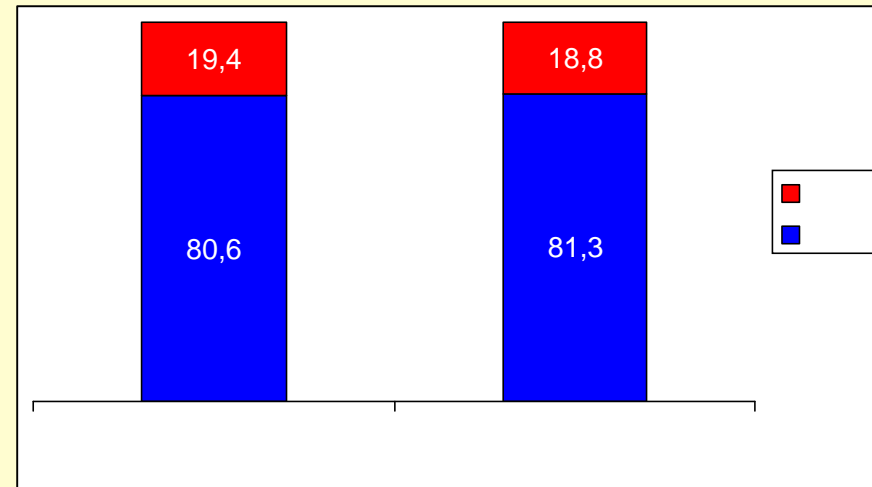


• ( )

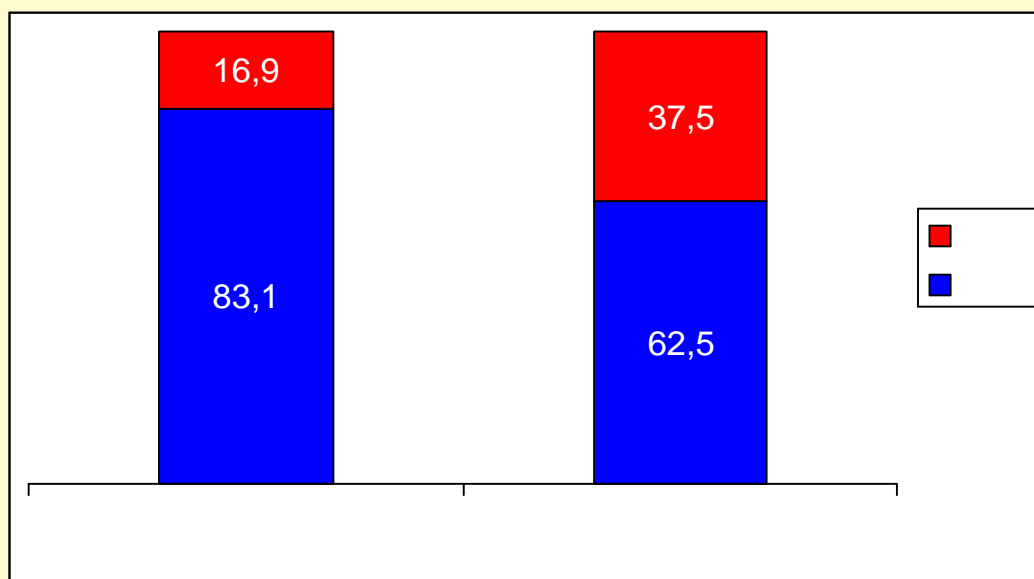
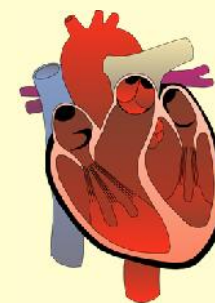


= 0,938; 95% 0,465-1,893

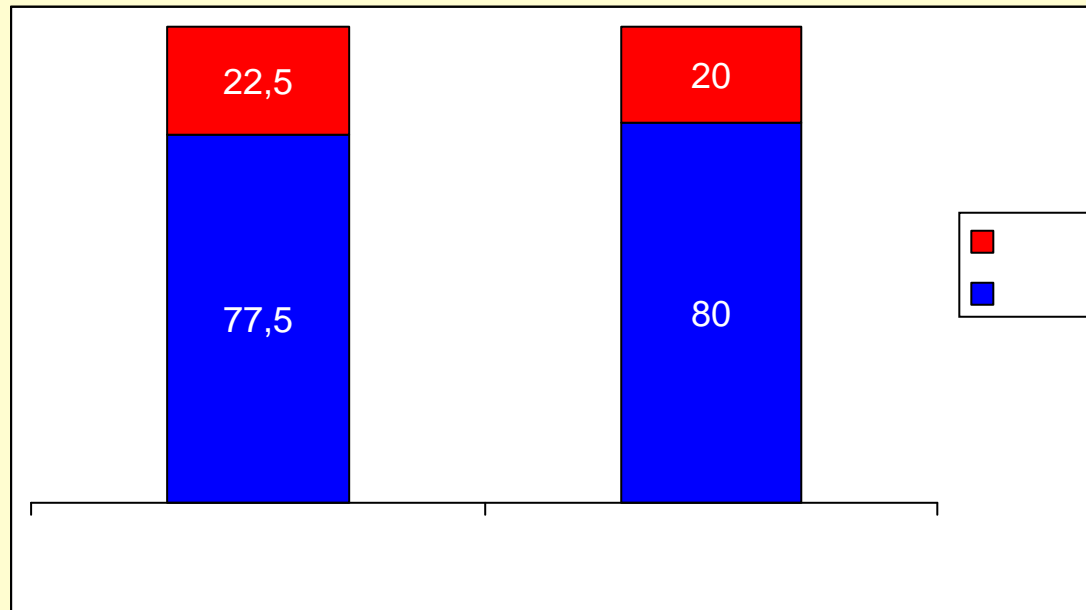
•



= 0,959; 95% 0,545-1,688



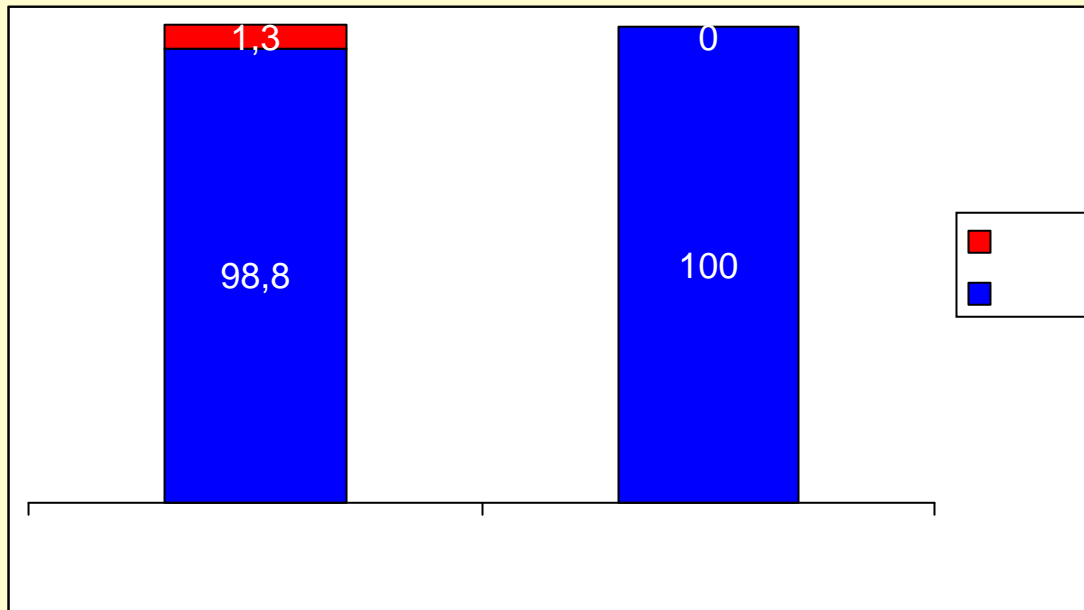
= 2,878; 95% 1,704-4,858



(29)



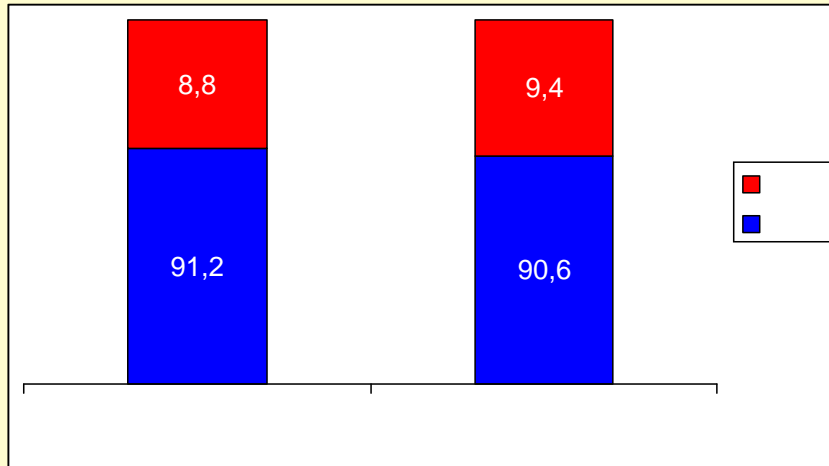
= 0,861; 95% 0,504-1,472



= 0,698; 95% 0,330-1,477

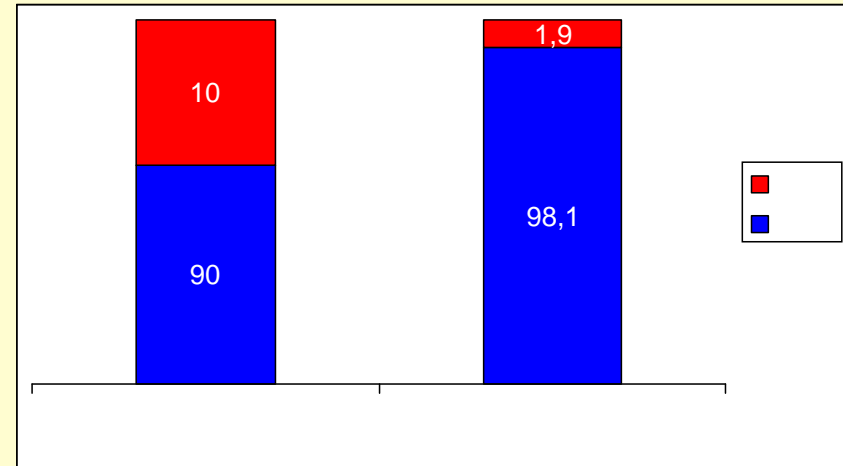


•



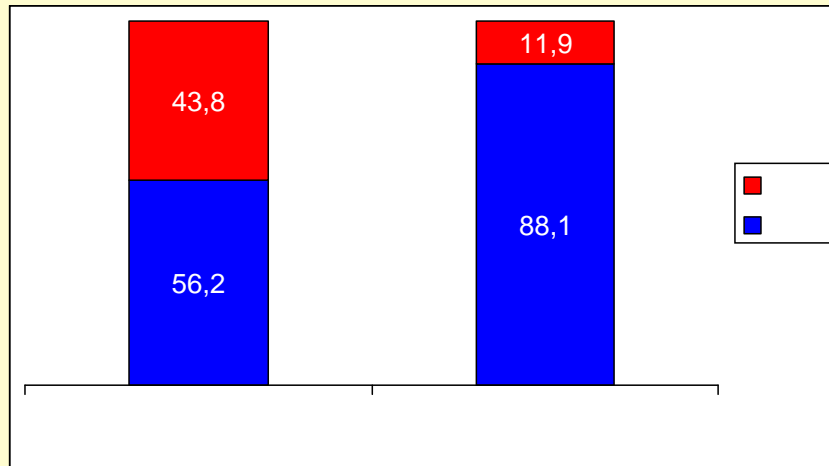
= 1,079; 95% 0,503-2,315

•

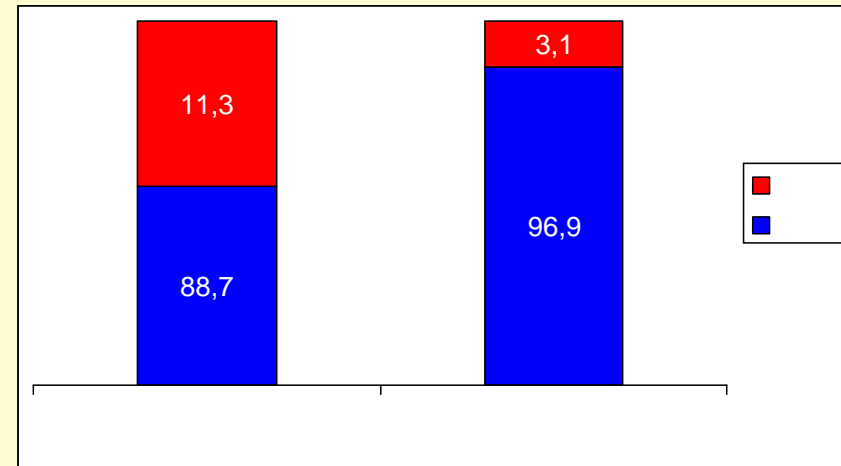


= 0,172; 95% 0,049-0,602

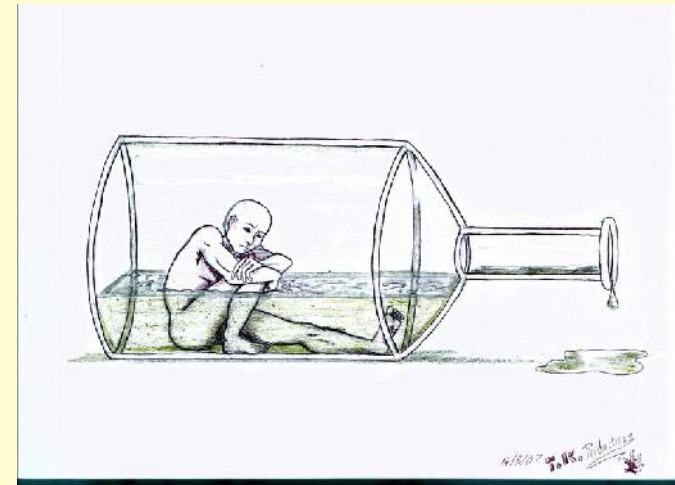
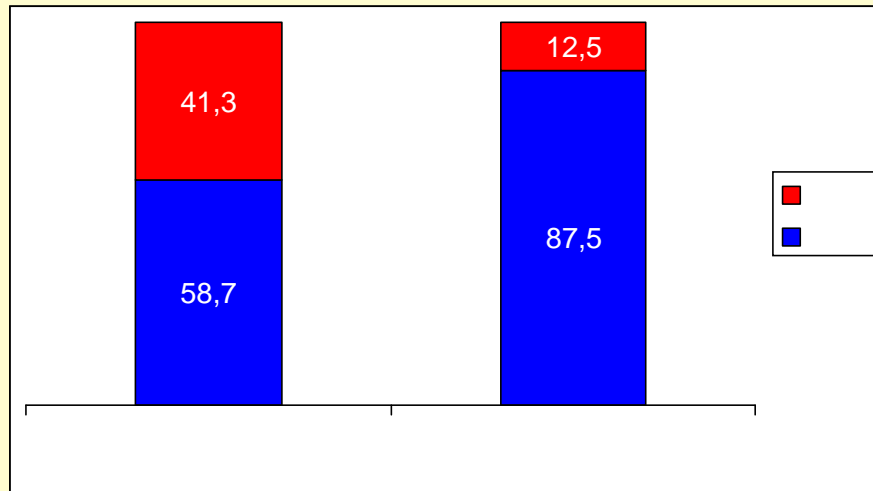




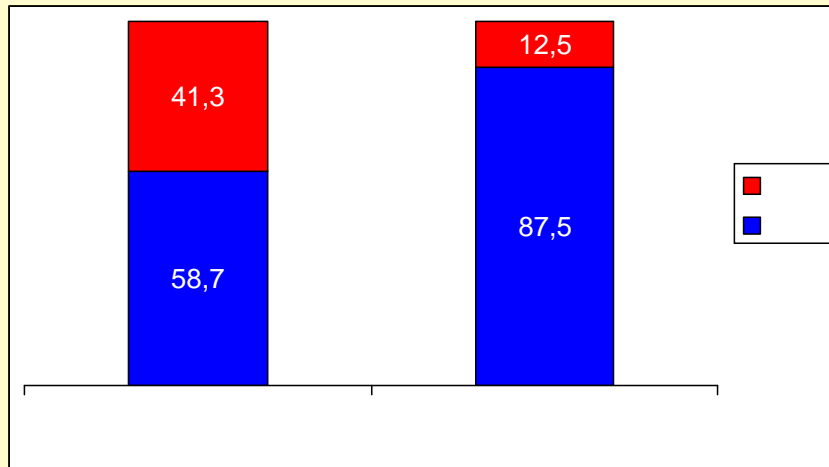
= 0,173; 95% 0,098-0,307



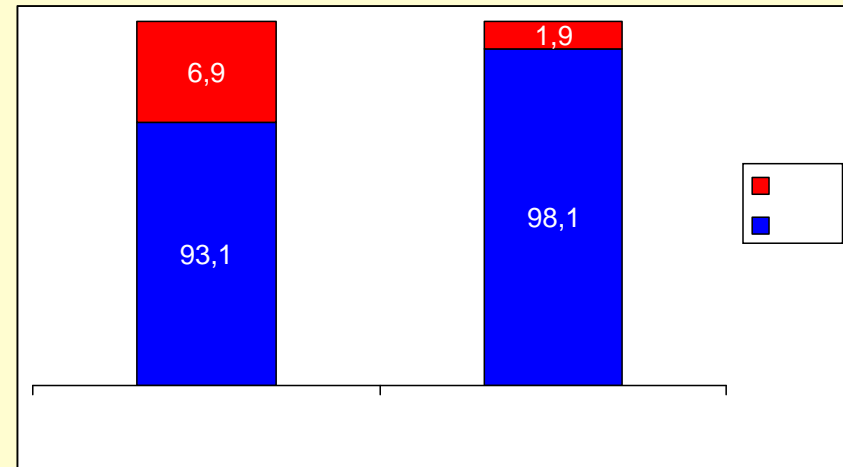
= 0,254; 95% 0,092-0,703



= 0,203; 95% 0,116-0,358



= 0,560; 95% 0,161-1,953



= 0,259; 95% 0,071-0,946

(N = 320)

