

V

, 13-16. .2015

-

,

-

,

.

,

,

,

.



49

,

:

- 28,

18

81

- 21.

.

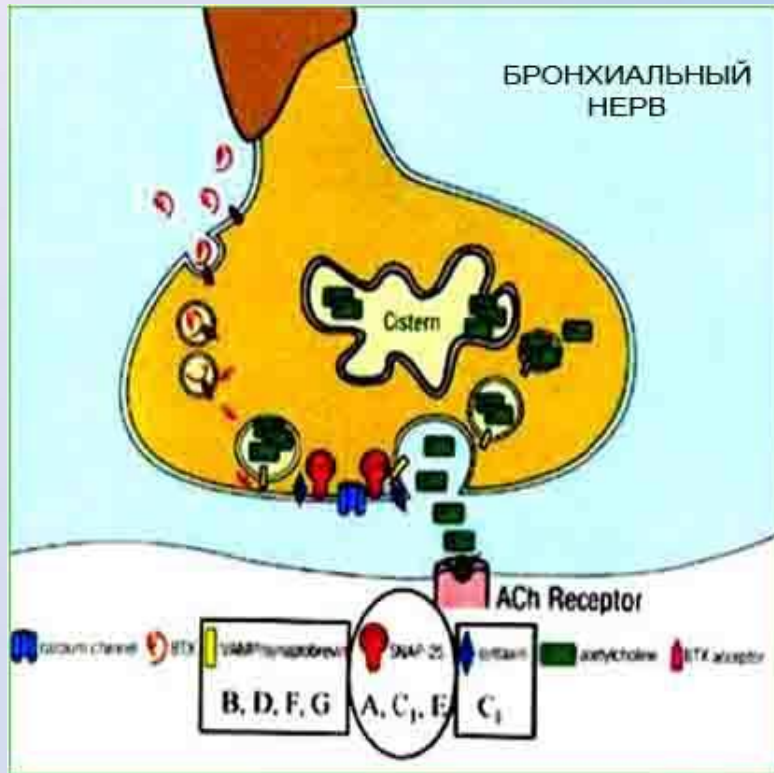
,

,

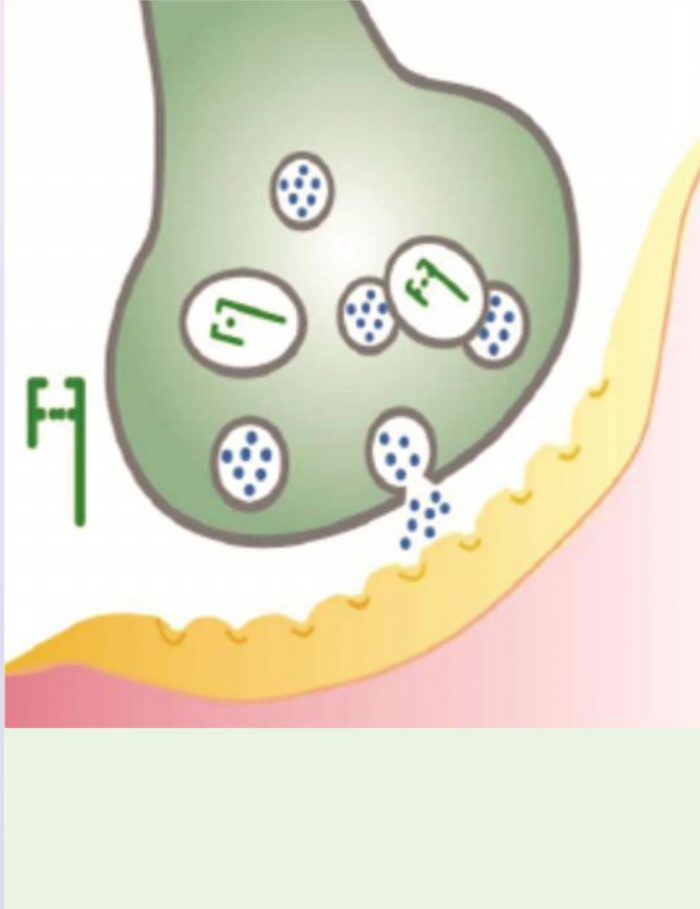
.

.

. .:								
		18-35	36-60	60	I	II	III	IV
	49	6	20	23	5	10	29	5
	28	4	12	12	3	4	16	5
	21	2	8	11	2	6	13	0



-
,

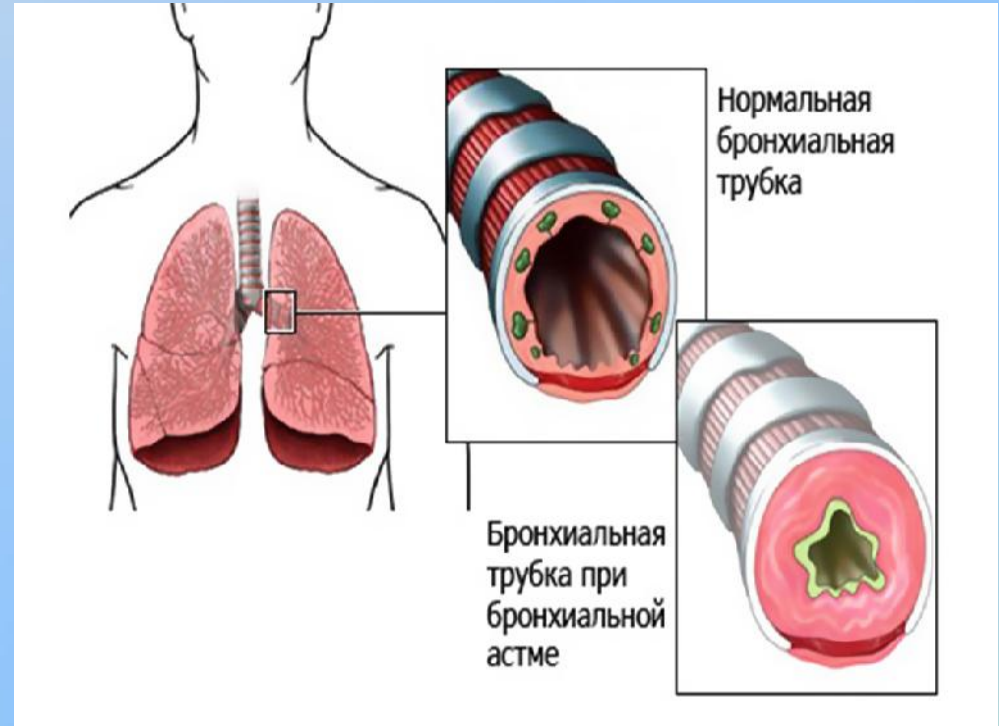
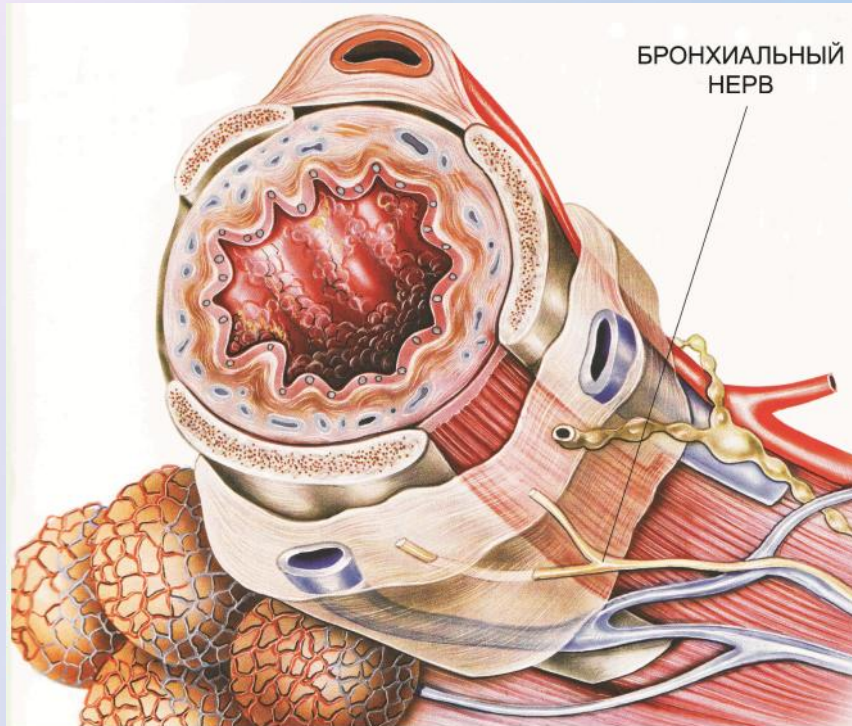


_____ (

).

.

.



250

1

,

.

,

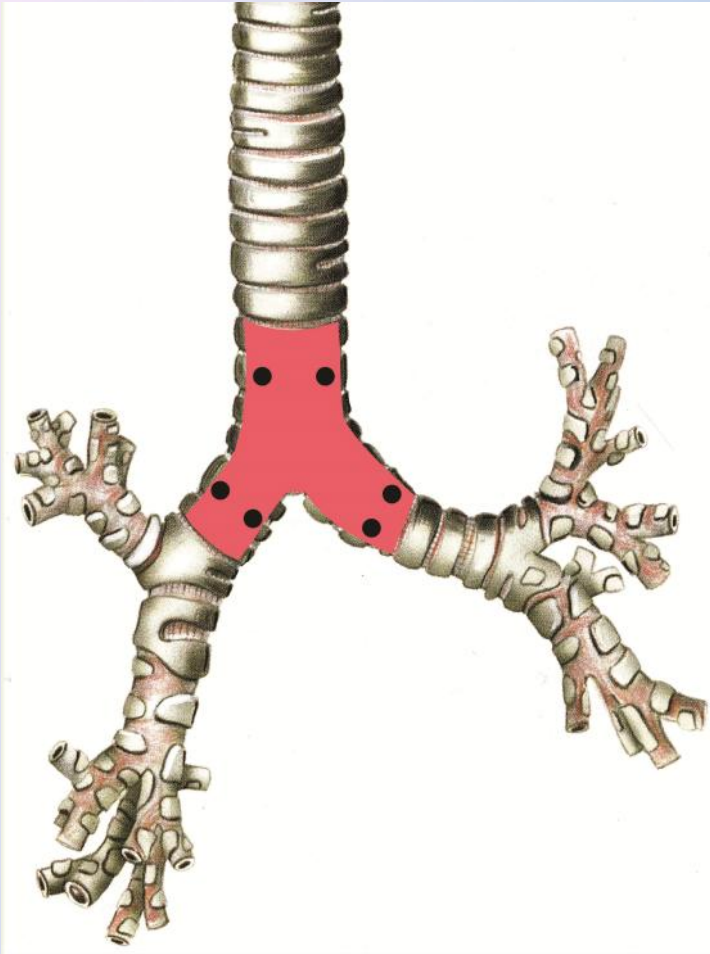
.

1

6

.

.



- 1)
- 2)
- 3)
- 4)

.

•

-

-

,

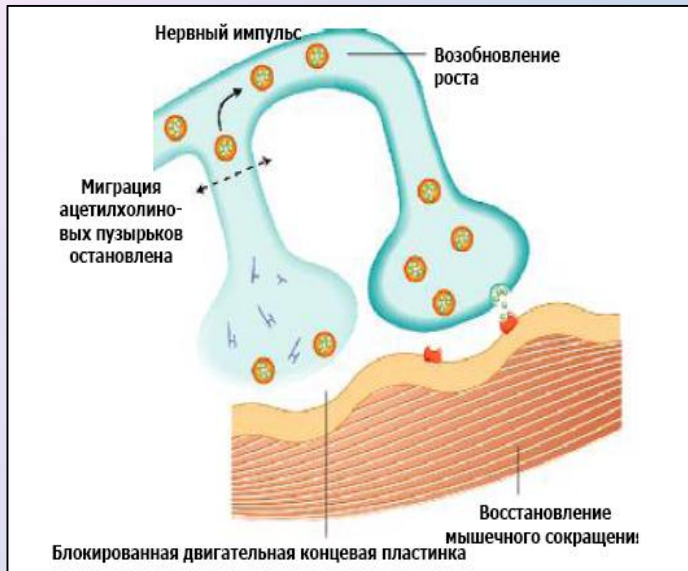
Clostridium botulinum.

•

500 U *Clostridium botulinum*







’
,
.
« ».
- ,
.
6-12 .
(,
.)
.

	3 – 6 .		6 – 12 .		12 – 24 .		24 – 36 .	

49	4	5	15	12	6	2	3	2
% -	14,3	23,8	54	57,2	21	9,5	10,7	9,5
%	18,4		55,1		16,3		10,2	

- 49. . - 12 . - 16								
	3 - 6 .		6 - 12 .		12 - 24 .		24 - 36 .	

	2	3	8	10	0	1	2	2
	2	3	4	6	0	0	0	0
	0	0	4	4	0	1	2	2

24 (85,7%)

(14,3%) **1,5-2 .** **4** *

* -

,

24 36 .

6-

12-

.

.

.

***СПАСИБО
ЗА ВНИМАНИЕ!***